

Thomas Reid

Ltd

DECK MACHINERY MANUFACTURERS



A tradition of excellence in deck machinery design and manufacture for 160 years

Since its founding in 1852 Thomas Reid and Sons has been designing and manufacturing the highest quality deck machinery. The company's all-encompassing experience covers every type of vessel from merchant ships and naval vessels to the world's most prestigious super yachts.

The designers and production teams at Thomas Reid have two considerations that override all others: fitness for purpose and the quality of both the materials and the manufacture of the equipment produced.

The company is now a subsidiary of Stone Marine Services which has worldwide service and repair abilities ensuring that any vessel fitted with Thomas Reid equipment is assured of the best possible support, 24 hours a day, 365 days a year.



THOMAS REID AND SONS (PAISLEY) LTD

The Company History

Founded in 1852 as blacksmiths and general engineers it is lucky for mariners the world over that the first Thomas Reid was a passionate sailor. His interests led him to very quickly realise that the standard of deck gear on yachts was generally of both poor design and quality and he set about radically improving both. His success is best demonstrated in Thomas Reid deck machinery becoming, over the years, the number one choice for some of the most prestigious vessels of their day. Many famous yachts are equipped or have been re-equipped with Thomas Reid machinery, among them such famous names as H.M.Y. Britannia, S.Y. Shamrock, S.Y. Endeavour and S.Y. Lulworth.



Thomas Reid today

Nothing has changed as far as the philosophy which has always predominated at Thomas Reid. Designs are continuously updated, manufacturing techniques and materials change, but the ability of those designs to do the job required of them and the manufacturing standards to which they are built remain the highest available. It is little wonder therefore that Thomas Reid deck machinery can now be found on a huge range of merchant and naval vessels around the world.

For Royal Naval vessels like the Type 23 Frigates and Minehunters, commercial vessels of every type and some of the most admired superyachts, both young and old, Thomas Reid deck machinery is considered to be an essential name on the ships equipment inventory.

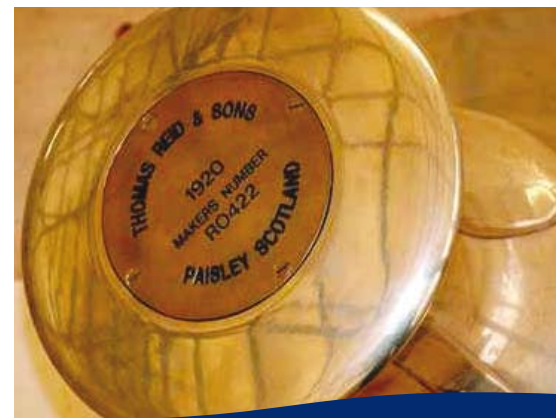
Deck machinery range

The company design and manufacture a full range of deck equipment including winches and windlasses, anchor and warping capstans, replenishment at sea machinery, mine recovery equipment, and ship steering systems. All are custom designed for both the vessel they are fitted to and the type of work they will be required to undertake. For example mine recovery equipment is designed to satisfy exacting naval requirements including high resistance to shock loadings, low magnetic permeability and strict noise and vibration requirements.



Working with us

Thomas Reid are available from the earliest days of a vessels inception right through its long working life. Our dedicated staff are delighted to work with naval architects, shipbuilders and project management teams from the initial stages of a new build or refurbishment contract to assist in optimising both the equipment selection and the arrangement of deck layouts. Testing of equipment prior to delivery is to Lloyds and when in commission the provision of spares, servicing, overhauls and upgrades is available worldwide.



Thomas Reid 
Ltd

THOMAS REID & SONS (PAISLEY) LTD
East Ness, Preston Crescent, Inverkeithing, Fife KY11 1DS, UK T: +44 (0)1383 419475 F: +44 (0)1383 415600
www.thomasreidandsons.com

Thomas Reid is a Stone Marine Services Ltd company